

USB box driver installation under VISTA OS

At present, USB box's driver can not be installed automatically under VISTA OS due to uncertain causes. The problem is being checked. Up to now, installation of USB box should be completed manually.

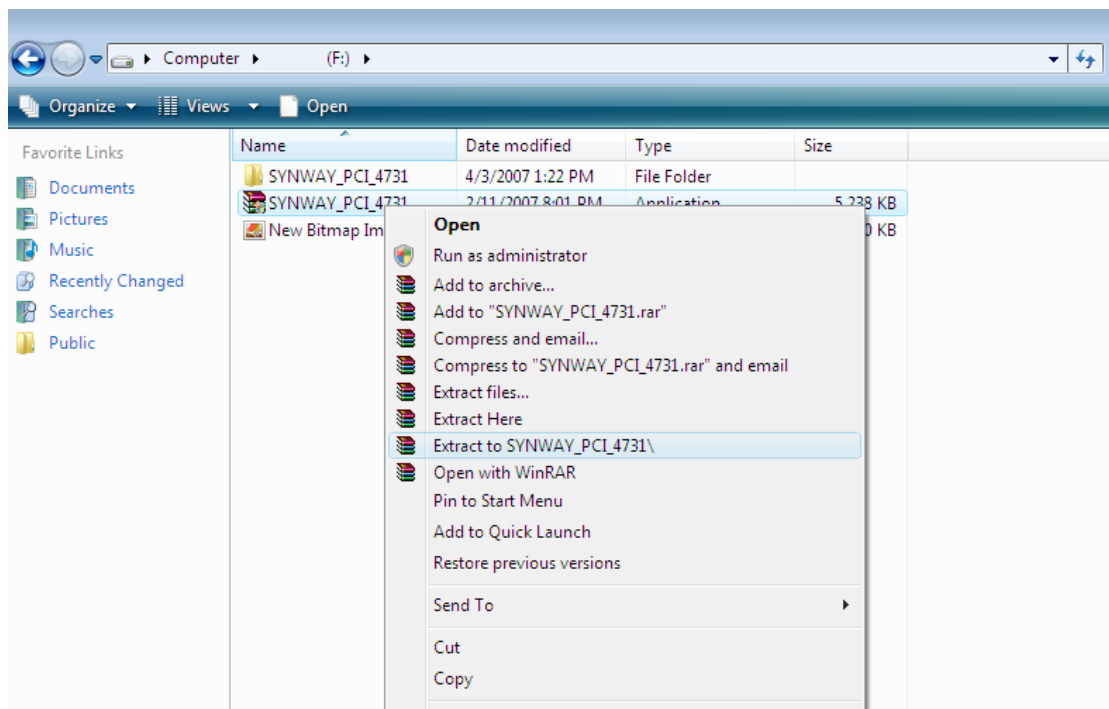
This doc presents how to install driver by hand for USB box under VISTA OS.

Latest driver can be downloaded from our website at

http://www.synway.net/support/Driver_download.asp.

Here we take driver 4731 for example to illustrate how to install USB under vista OS.

- 1) After inserting the box into USB interface on the pc, **extract (use Winrar or WinZip)** driver package SYNWAY_PCI_4731 downloaded. **(If your system does not support WinRAR or WinZip, please download from web first.)**

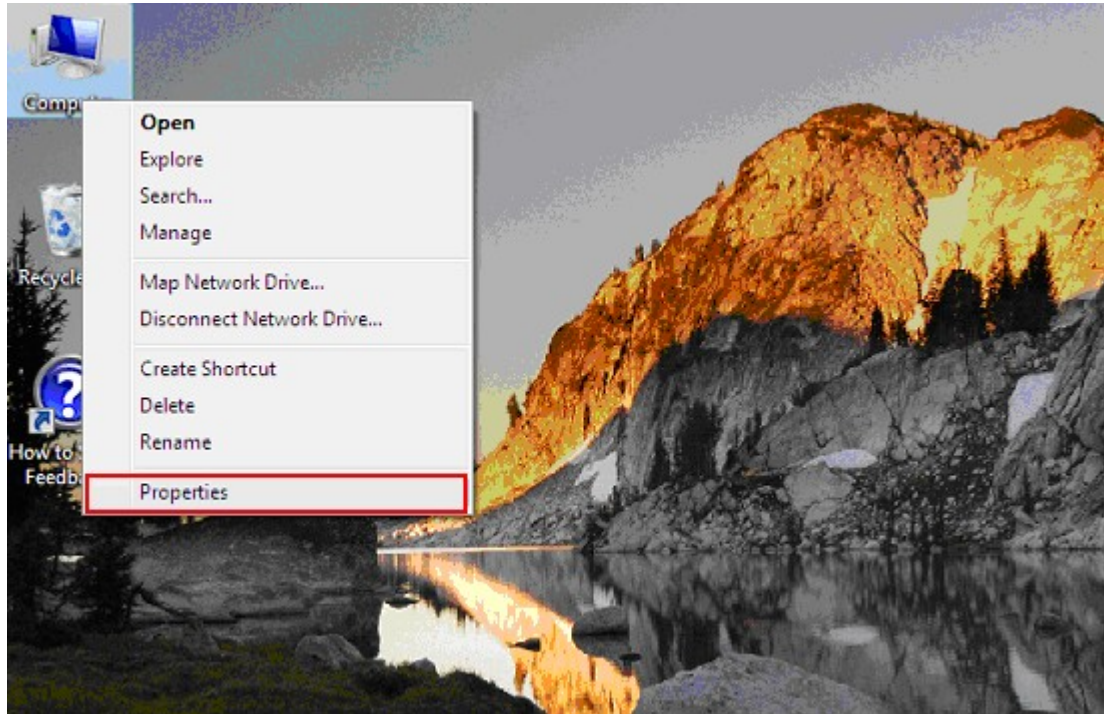


- 2) Copy all the files from SYNWAY_PCI_4731_driver\DSP-bin to SYSTEM DISK:\WINDOWS\system32\drivers, files from SYNWAY_PCI_4731_driver\OutputWin2000 as well.

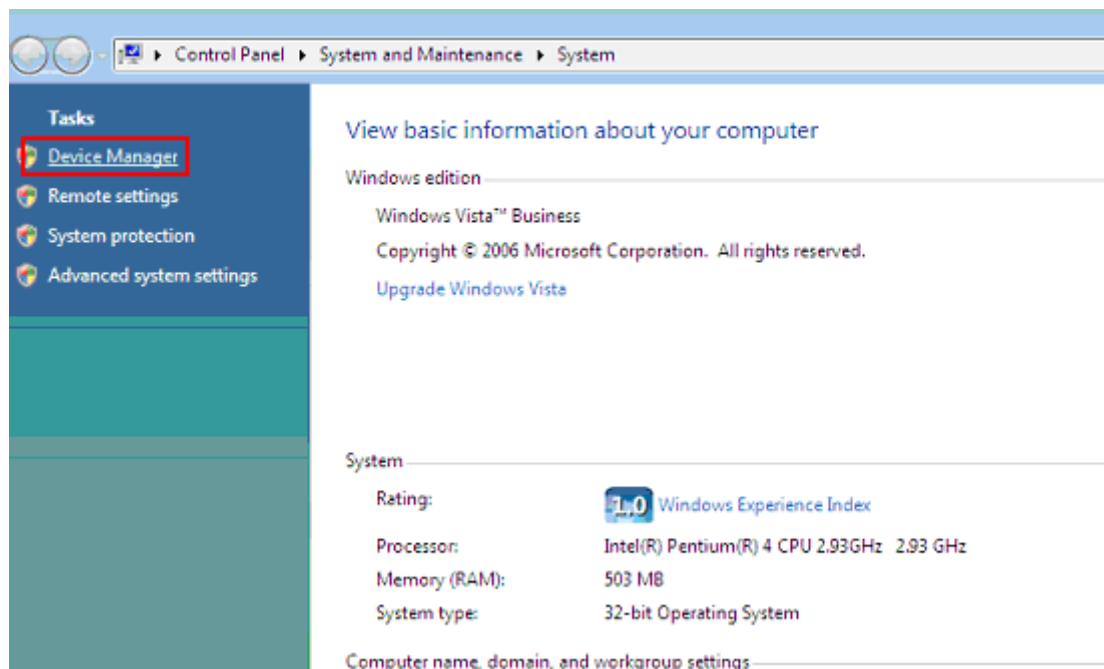
- 3) Copy all the files from SYNWAY_PCI_4731_driver\DLL to SYSTEM DISK:\

WINDOWS.

4) Start installation of box driver as follows:



Right-click on [Computer] and select [Properties].



5) Click [Device Manager] to enter driver manger window.

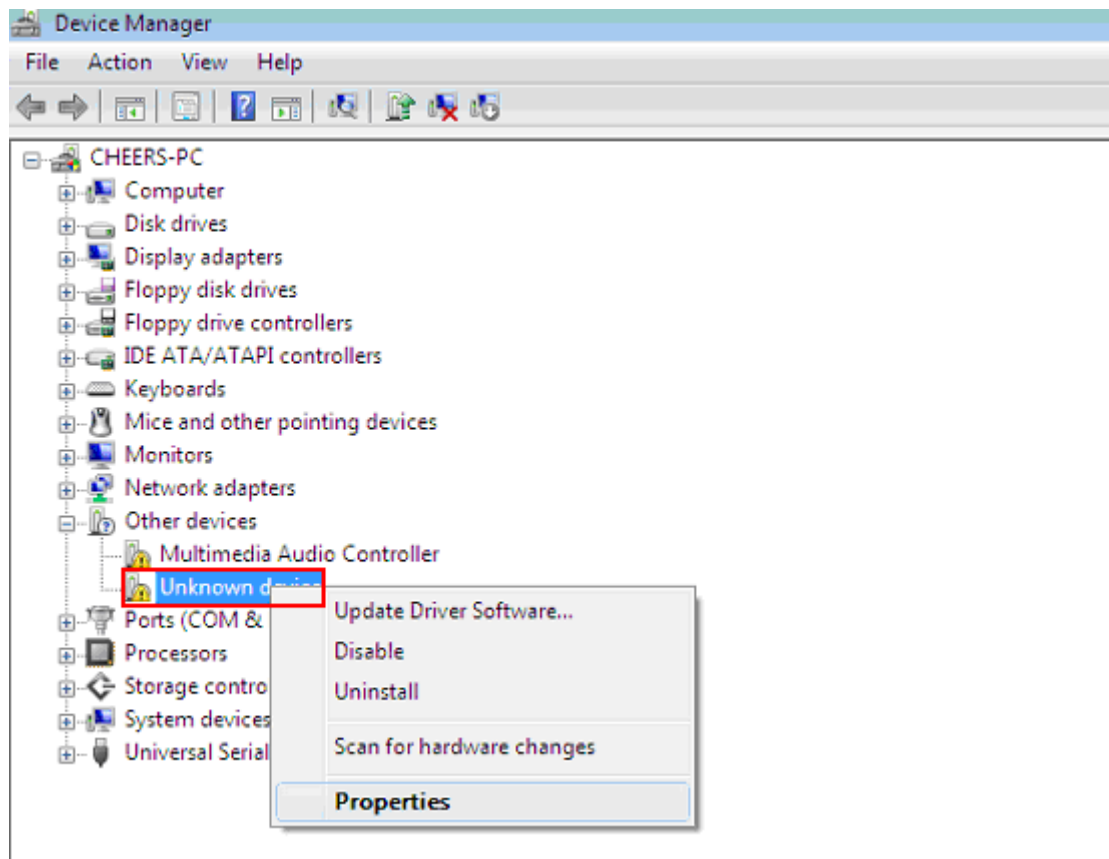


Chart 5-1

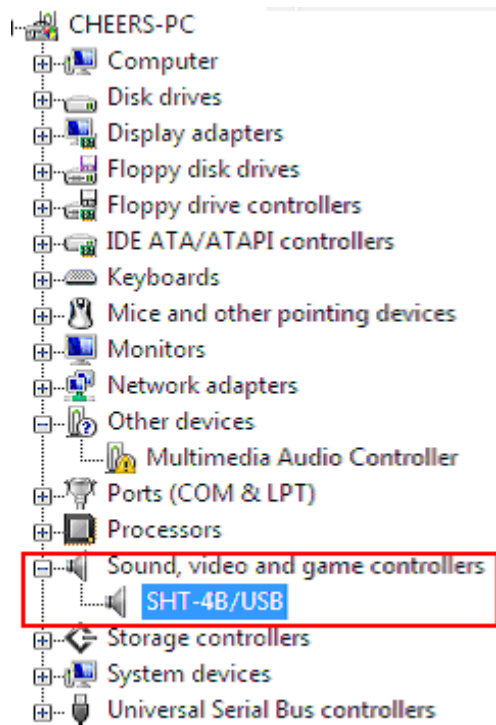


Chart 5-2

- 6) Right-click on item [Unknown device] and select [Properties](as Chart 5-1 shows). Or if you are going to update driver for the installed board you may right-click on item [SHT-4B/USB] and select [Properties](as Chart 5-2 shows).

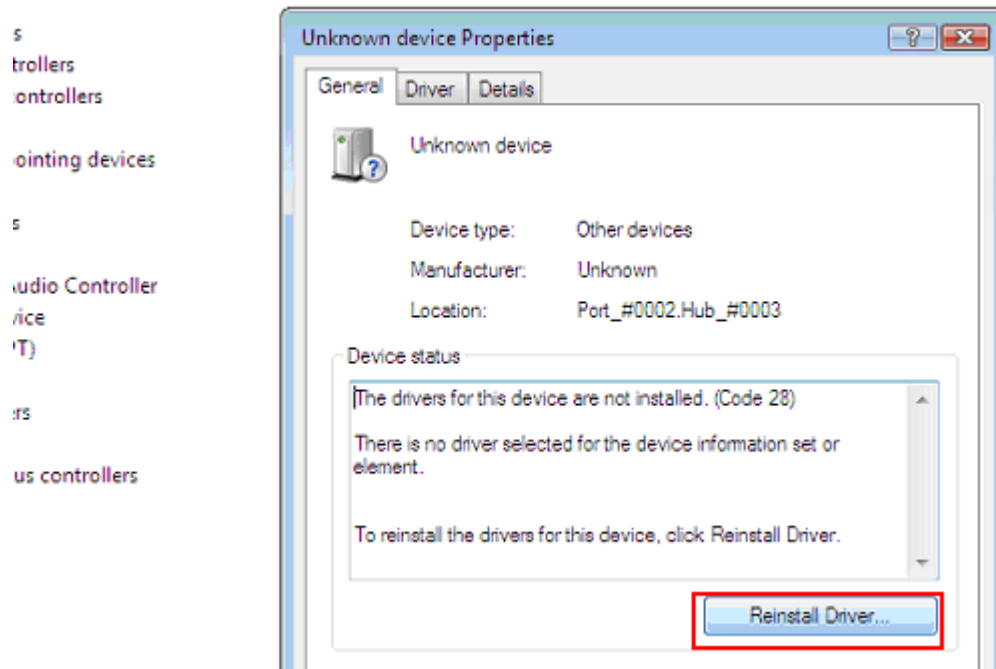


Chart 6-1

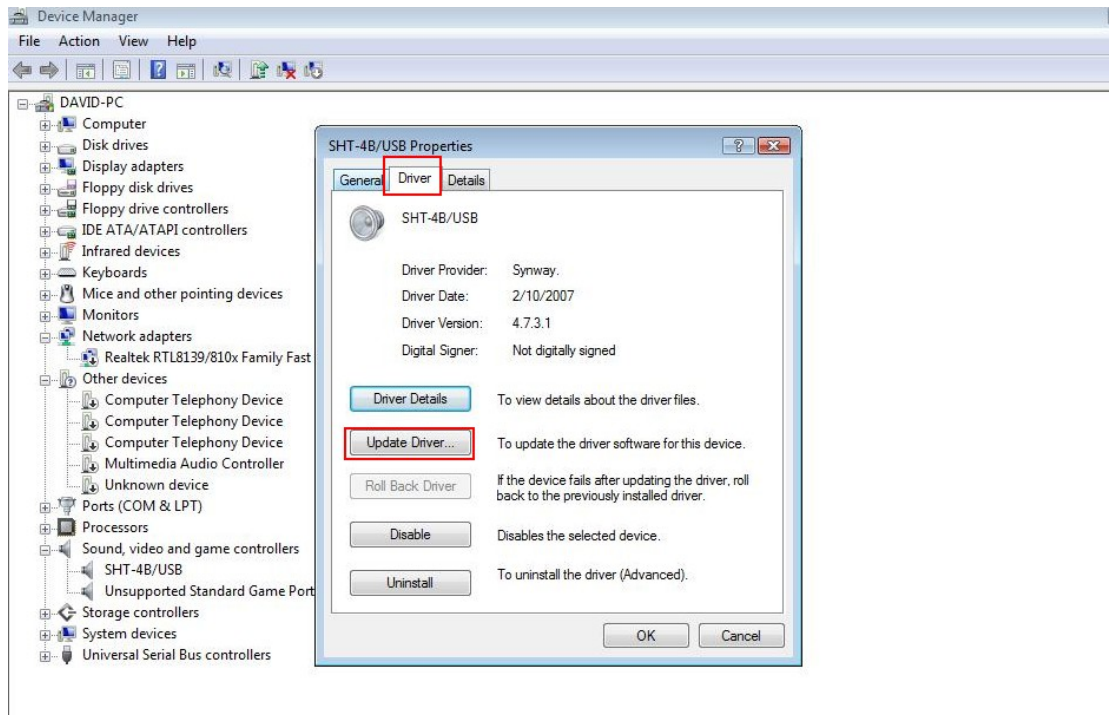
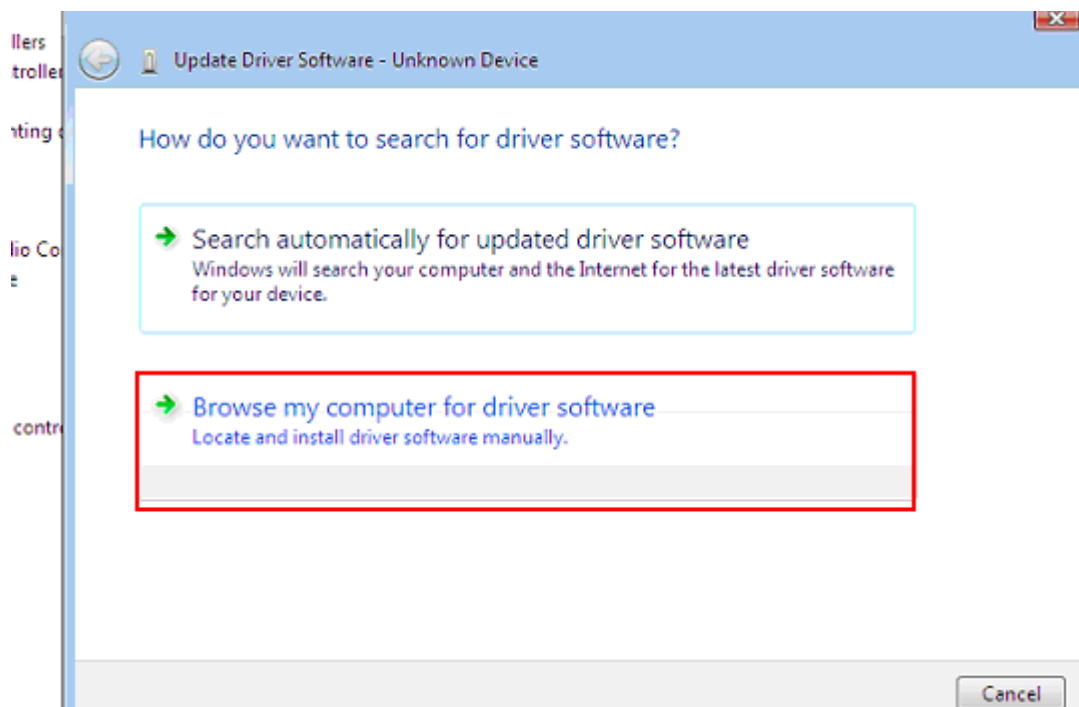
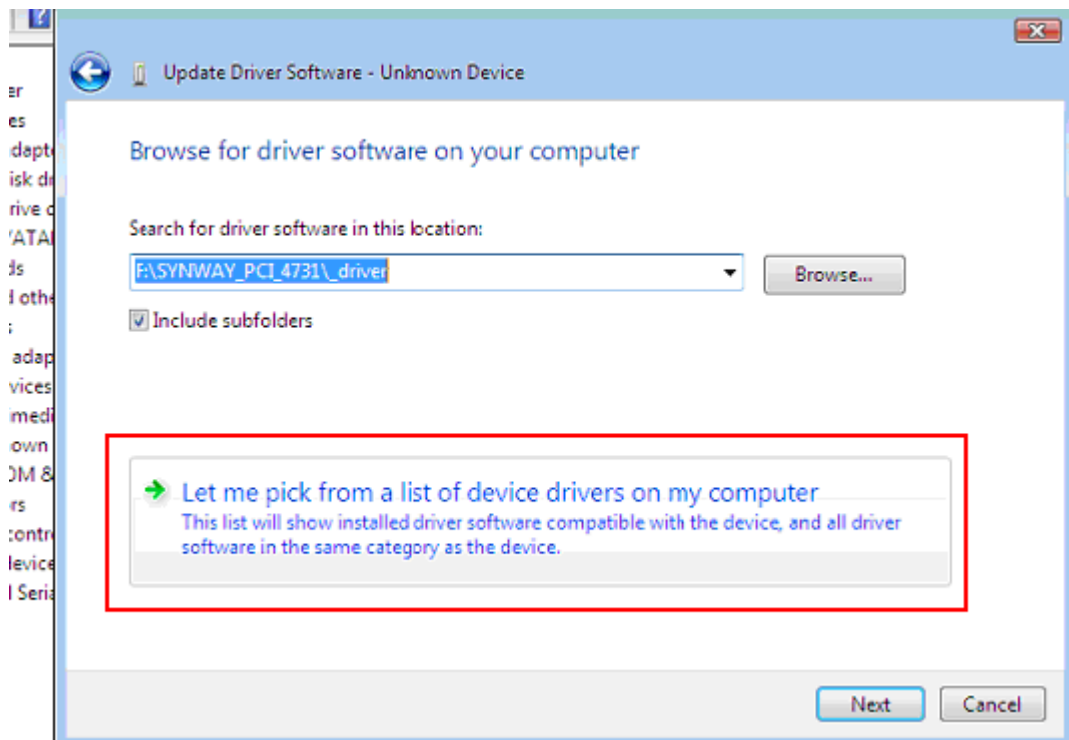


Chart 6-2

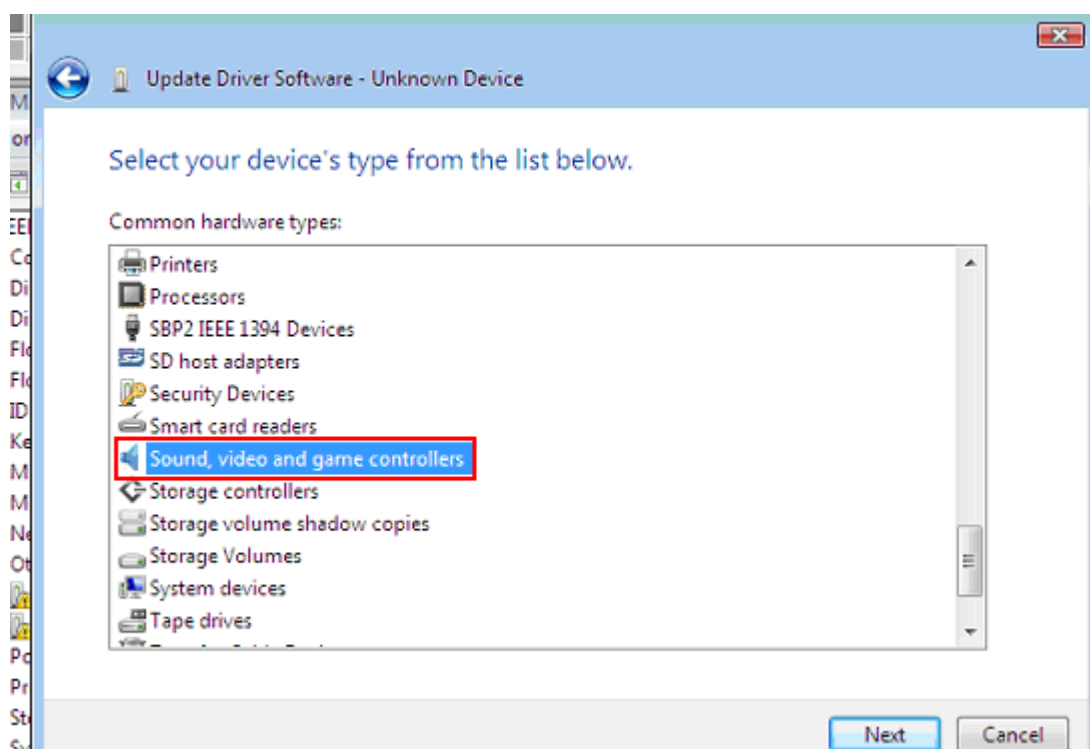
- 7) Click [Reinstall Driver...] (as Chart 6-1 shows). Or if you are going to update the driver, you may turn to the tab of [Driver] then Click [Update Driver].



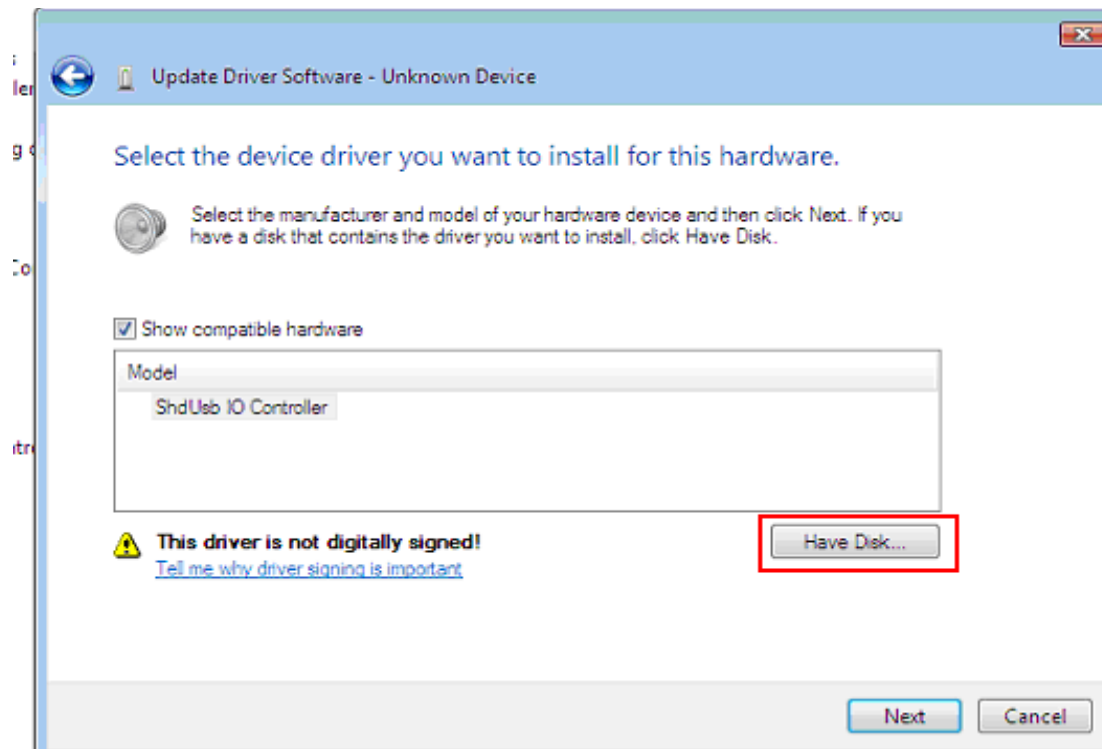
8) Select [Browse my computer for driver software].



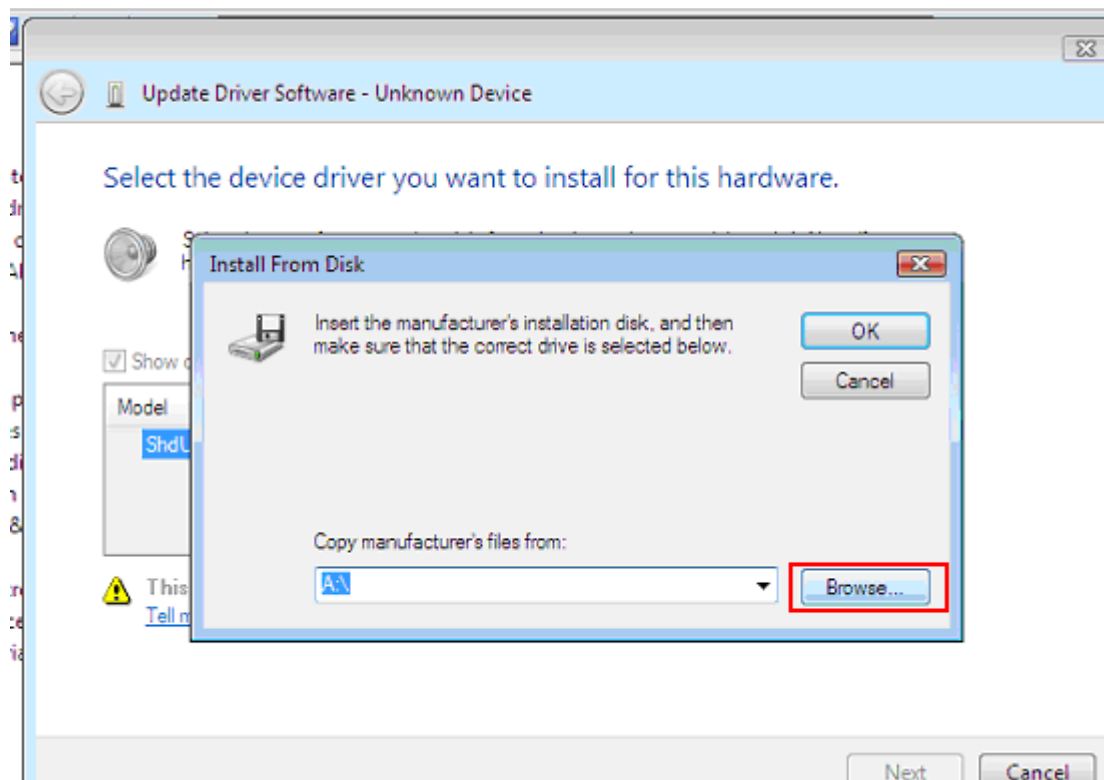
9) Select [Let me pick from a list of]



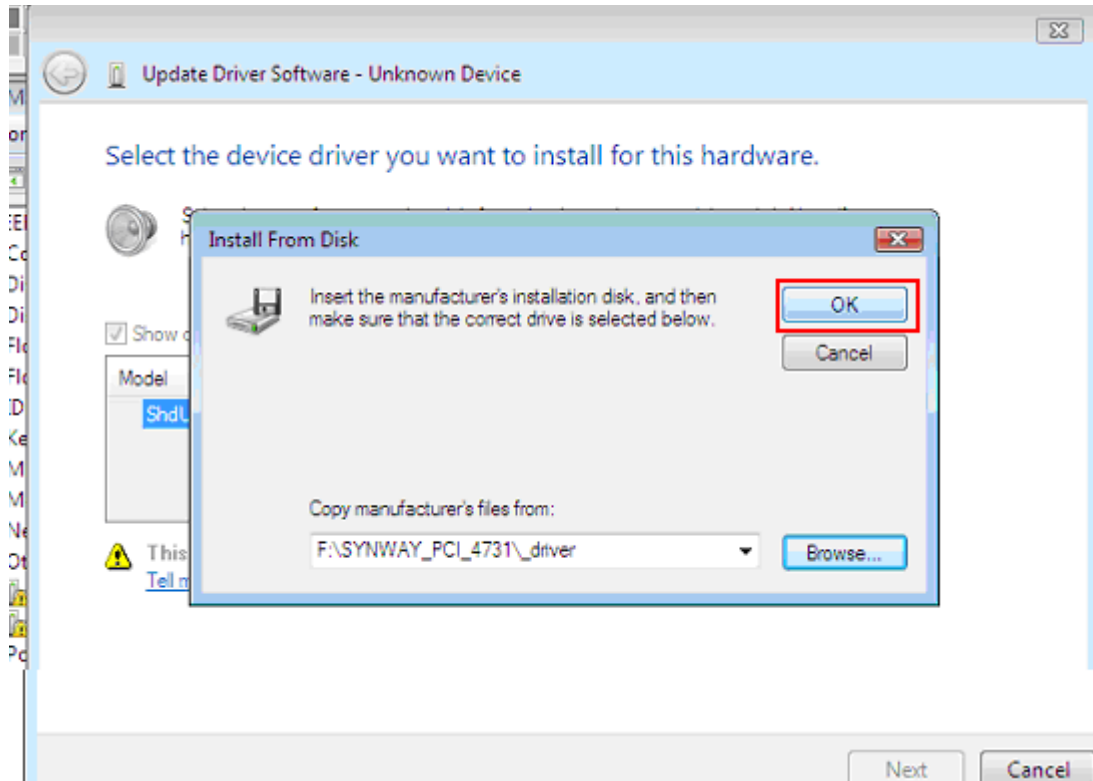
10) Double-click on [Sound ,video and game controllers]



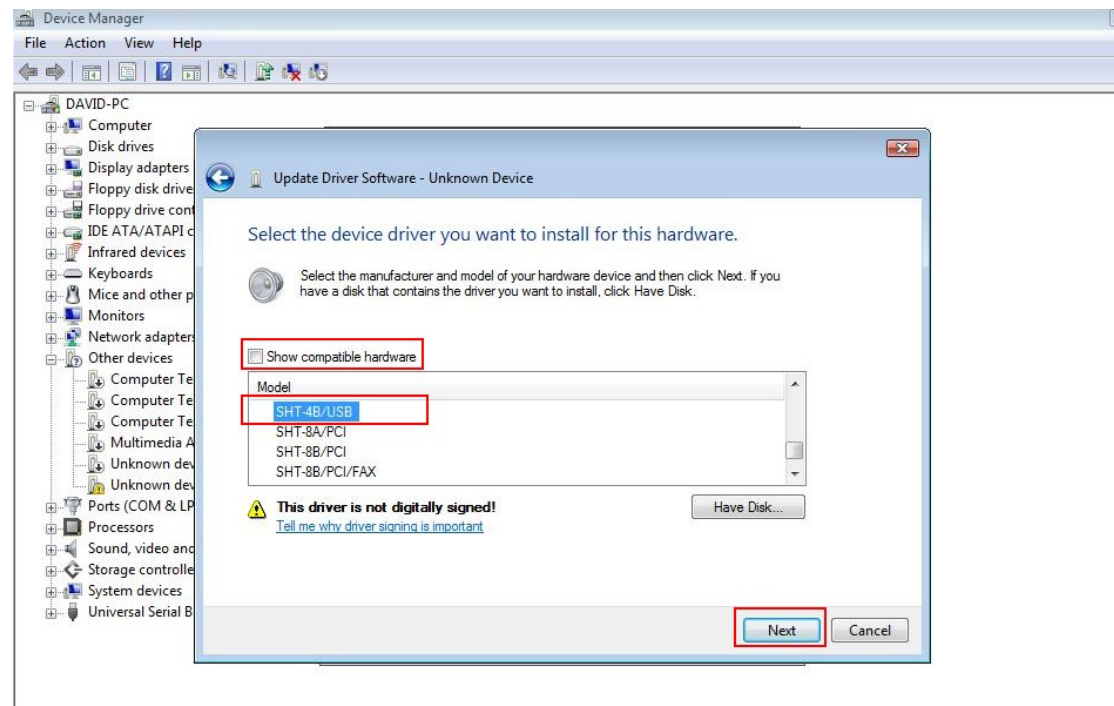
11) Click [Have Disk...]



12) Click [Browse] and select driver installation file. Here we use ShdPci.inf in SYNWAY_PCI_4731_driver\

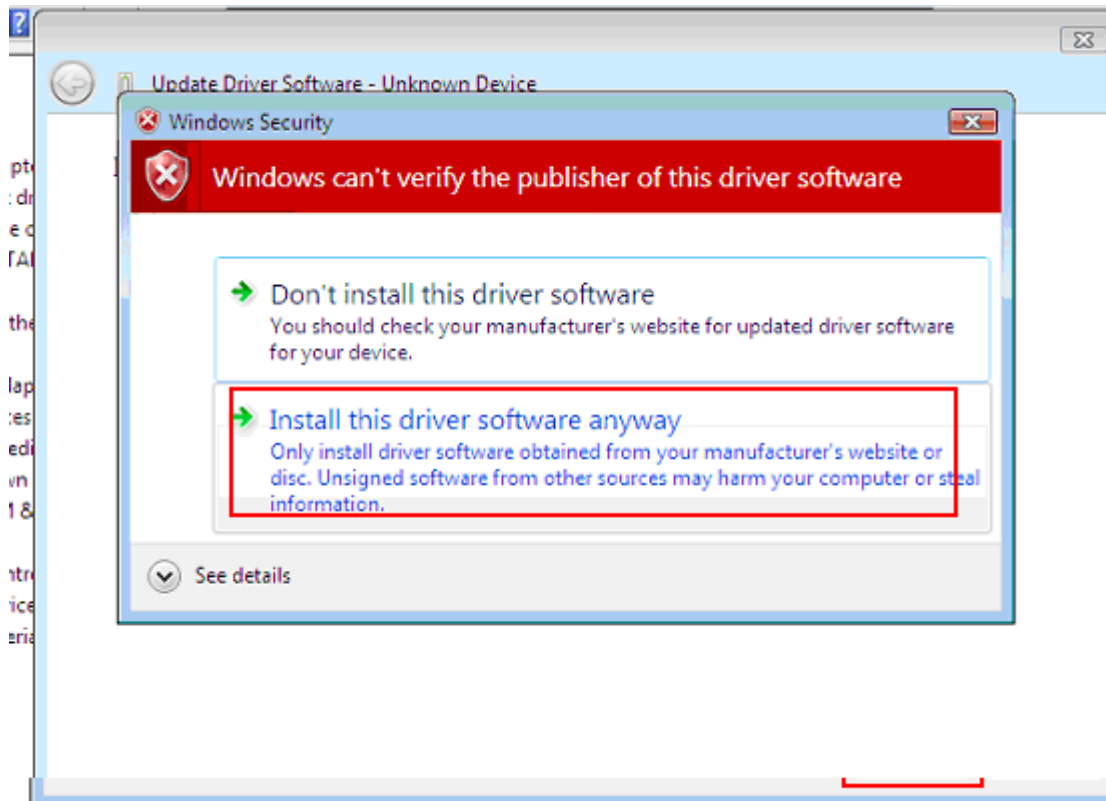


13) Click [OK]

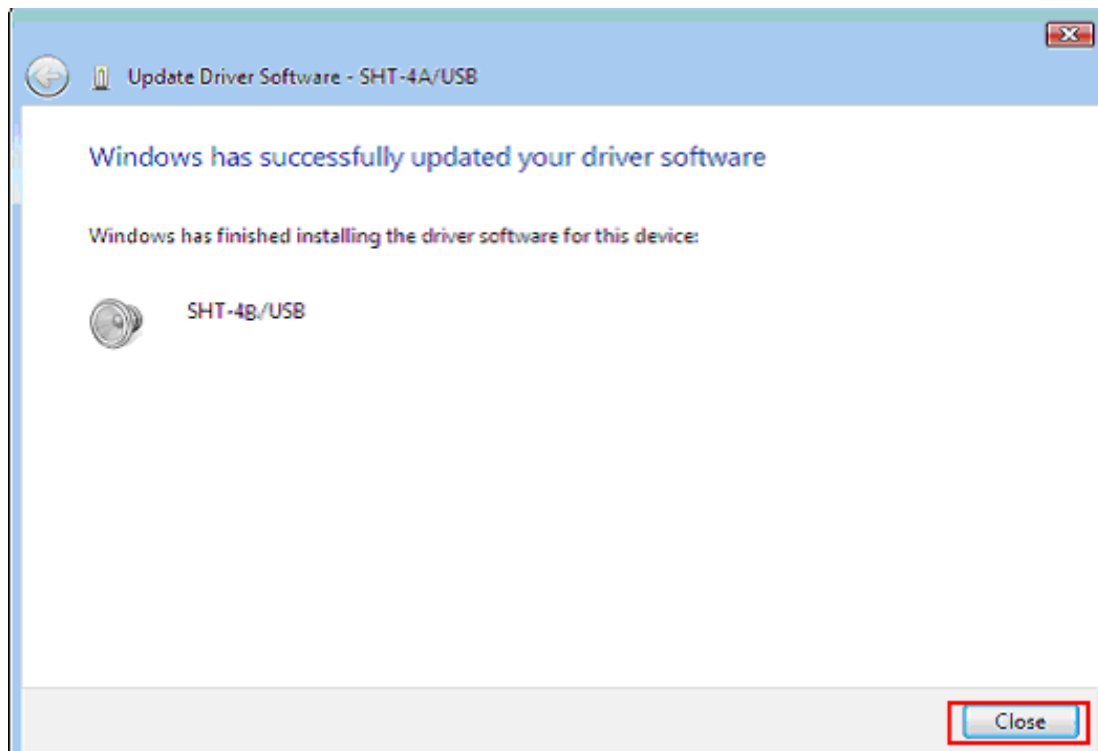


14) Disable [Show compatible hardware] and select the board model e.g. SHT-4B/USB.

Then Click [Next].

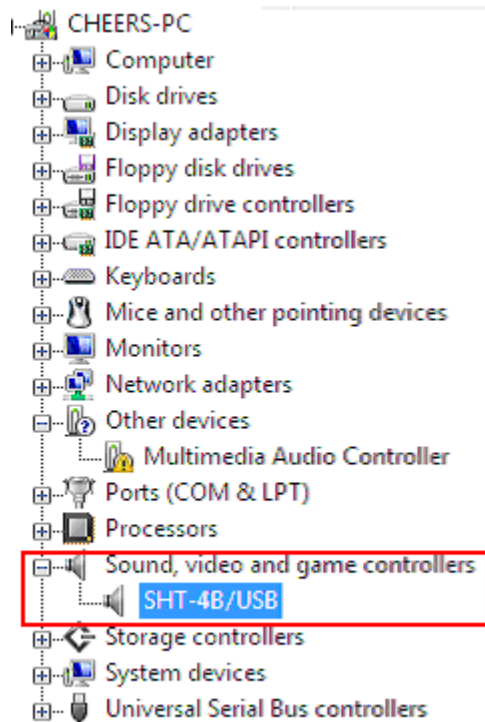


15) Click [Install this driver software anyway] to start installation of box's driver. When the installation is completed, following window will pop up.



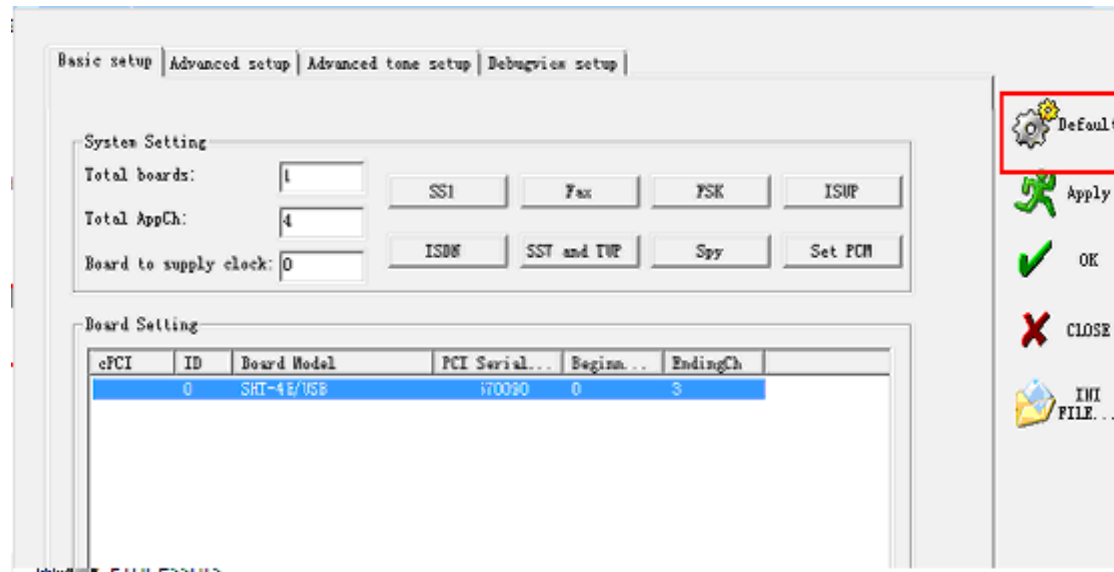
16) Click [Close]

17) So far, installation of USB box under vista OS is completed, you can check info of USB installed in device manager, as shown in figure below. Model of the box is listed



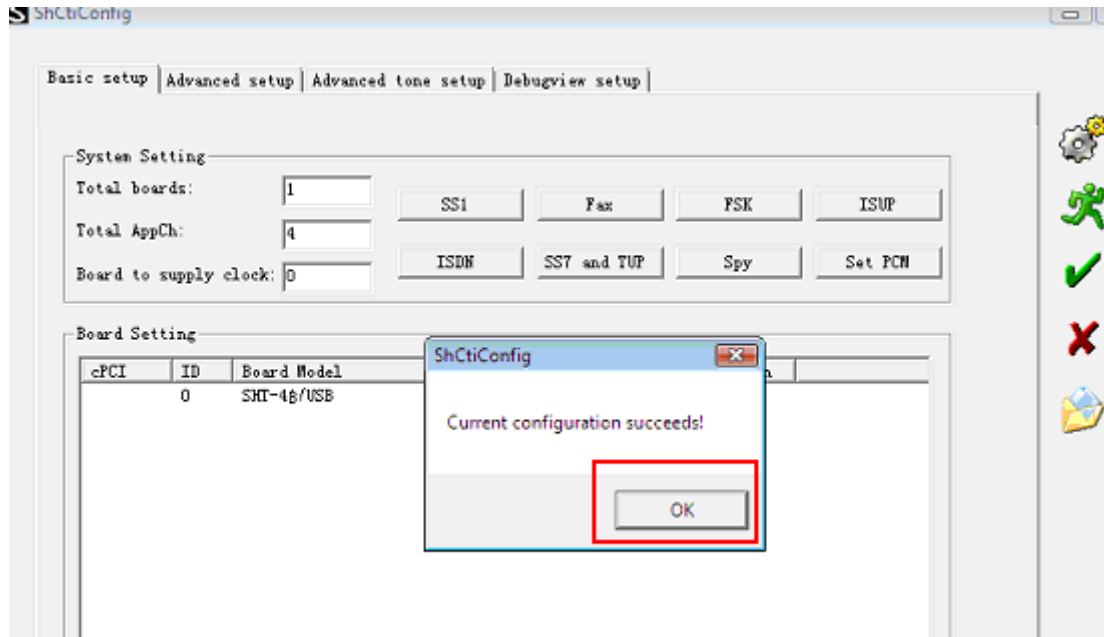
under Sound, video and game controllers. (If you have done an updating you'd better reload the driver by clicking [Disable] and following [Enable] on the board e.g. SHT-4B/USB).

18) After the installation, some basic setting should be made before an application is started. Locate system configuration program ShCtiConfig.exe in directory SYNWAY_PCI_4731\Tools and start it, as shown in figure below. (Currently USB board



can not work with PCI board, so you shall disable PCI board if there is)

19) Click [Default], then default setting for the box will be loaded.



20) Click [Apply] and message [Current configuration succeeds] will be popped up, which means installation of the box is ok. Then click [Ok] and click [Close] on the main interface to exit the configuration program.

21) Start test program Test.exe under directory Run SYNWAY_PCI_4731\Tools, after that, you can start some tests on the board.